



INSTITUTE FOR SOUTHEAST ASIAN ARCHAEOLOGY (ISEAA) NEWSLETTER

ISSUE 1 FALL/WINTER 2014

ISEAA Celebrates

OUR ONE YEAR ANNIVERSARY!

Forward we go! A lot has happened in what seems like a VERY short year since ISEAA was established in October 2013. We're in full swing to continue the research and publication program of Thai and Lao archaeology, thus continuing Penn Museum research that began in the 1960s. Penn Museum is providing ISEAA some space and has appointed me a Consulting Scholar to the Museum which, though not a paid position, gives me access to some Penn resources. We are now a program partner of the Urban Affairs Coalition, which manages the funds we raise thus allowing us to focus on research and publication and giving us our nonprofit status.

Thanks to your contributions to ISEAA, we've been able to hire some key part-timers. Dr. Page Selinsky, our editor, is helping prepare Ban Chiang monograph manuscripts. We also continue to employ Ardeth Anderson in graphics, illustration, and layout, as well as Dr. Elizabeth Hamilton to continue work on the Ban Chiang Metals monograph and the MMAP regional database.

The year 2013-2014 was chock full of productive activity:

- Twelve of 17 chapters are now completed for the Ban Chiang metals monograph.

- Our 300-plus page final report went to the Henry Luce Foundation, covering work by our international team of scholars over the past 6 years under the grant to the Penn Museum "Strengthening the Future of Southeast Asian Archaeology: Investigating Prehistoric Settlement of the Middle Mekong Basin".

- Elizabeth Hamilton completed the final migration of the original Ban Chiang computer data coded in the 1970s into the MMAP regional database. These data had been migrated from a mainframe database to an early desktop

database in the 1990s by then volunteer John Hastings (ISEAA founding donor and board chair). The stage is now set for a long-term ISEAA objective, namely to migrate our many digital assets to an online platform that will preserve these data despite ongoing changes in technology.

- I established the first-ever academic award in Southeast Asian archaeology, in order to encourage innovative work among early-career Southeast Asian archaeologists. Recipients of the \$1,000 biennial award will be chosen by an international committee of scholars. See



#Throwback Thursday - Circa 1975 - Some of the Ban Chiang excavation team, sporting team t-shirts! Clockwise from upper left: Mun, Charles Higham, Chet Gorman, Pake, Don McCauley, Juli, Deb Kramer, Soli, Marcia Brewster, and Suwanii, in the village of Ban Chiang, Thailand.

the following link: www.iseaarchaeology.org/award-committee-announcement.

- A short MMAP study season, held in Luang Prabang, included additional work on the regional database and ceramics catalogue.
- In a well-attended session on Lao Archaeology, MMAP team members and I presented our work at the 20th Congress of the Indo-Pacific Prehistory Association, in Siem Reap, Cambodia (see next article).
- About 400 people attended my keynote talk sponsored by the Luce Foundation and ACLS at the Association for Asian Studies Annual Conference in Philadelphia. *Hot Pots, Museum Raids, and the Race to Uncover Asia's Archaeological Past* pointed to the urgency of current archaeological work in Southeast Asia, amid threats to its rich cultural heritage posed by looting and destruction of sites.

Thanks to our donors: ISEAA now has a firm foundation that lets us continue to use the talents of ISEAA volunteers, interns, and work study students.

In particular, volunteer Dan LoMastro is a godsend for his extensive work with our digital image archive. We have more than 100,000 slides, negatives, and digital images from nearly half a century of research in Thailand, and now Laos. Dan has brought our total of scanned and digitally archived images to over 15,000, including thousands of images from the Penn excavations at Ban Chiang and other sites. He also enters searchable information about each image, thus preserving information about dates, sites, and people in those photos that otherwise might remain only in my head!

Our Public Outreach volunteer, Beth Van Horn, dragged me kicking and screaming into the 21st century. ISEAA now has a Facebook page, with new opportunities to connect with Southeast Asian archaeologists and

the public. Check out our Facebook page at:

www.facebook.com/ISEAArchaeology

Not only do we post substantive updates on ISEAA doings, but we're having a lot of fun on "Throwback Thursdays," a day to post vintage pictures from Ban Chiang and other archaeological history. See the photo on page one for example from the 1970s!

Check out the rest of the newsletter for more on MMAP, visitors during the year, student helpers and their projects, and more.

Not bad for a first year!! Thanks so much for your support!



Joyce C. White, Ph.D.

Executive Director

Institute for Southeast Asian Archaeology

Supporters note: FOBC has been phased out. Please continue to support our work through the ISEAA. See form on the last page or donate online.

MMAP IN SIEM REAP

From January 12-16, 2014, more than 750 researchers and participants from over 40 countries attended the 20th Congress of the Indo-Pacific Prehistory Association (IPPA) in Siem Reap, Cambodia. An IPPA Congress is held every 4 or so years, and is the major conference for Southeast Asian archaeologists and scholars from related disciplines who study the important role of mainland and island Southeast Asia in the prehistory of mankind.

MMAP team members representing the Institute for Southeast Asian Archaeology (ISEAA)/Penn Museum, University College Dublin, Lao PDR Department of Heritage, University of Washington, Australian National University, and Oxford University presented 9 of the 20 papers in one of the IPPA main sessions: "Filling the Gap: Current Archaeology in Lao PDR".

MMAP papers

Helen Lewis, Joyce White, and Bounheung Bouasisengpaseuth. "A buried



Joyce White speaks at the talk entitled, *Hot Pots, Museum Raids, and the Race to Uncover Asia's Archaeological Past*, at the Association for Asian Studies Annual Conference in Philadelphia on March 29th. Photo by Ben Abrams.

jar site and its destruction: Tham An Mah cave, Luang Prabang province, Lao PDR.” (In press in Proceedings of the First SEAMEO-SPAFA Archaeology Conference, Chonburi, Thailand, May 2013).

Philip J. Piper and Fredeliza Campos. “The MMAP animal bones and new insights into early-late Holocene human economic strategies at inland locations of mainland Southeast Asia.”

Ben Marwick. “Patterns in Holocene flaked artefact technology from excavations in Luang Prabang province.”

Sureeratana Bubpha and Joyce White. “Variability of earthenware ceramics from archaeological sites in Luang Prabang province, Lao PDR.”

Sian Halcrow and Korakot Boonlop. “The prehistoric human remains from four rockshelter sites in Luang Prabang province.”

Andreia Brandão, Stephen Oppenheimer, Onchansamone Ninethaphone, Noupanh Keosouda, Joyce White, Bounheuang Bouasisengpaseuth. “Laos mtDNA study in the MMAP project: preliminary survey findings.”

Bounheuang Bouasisengpaseuth and Joyce White. “The Middle Mekong Archaeological Project: an overview.”

Kim Samnang, Sarah Klassen, and Joyce White. “Hoabinhian landscape use in Luang Prabang province: a geo-spatial assessment.”

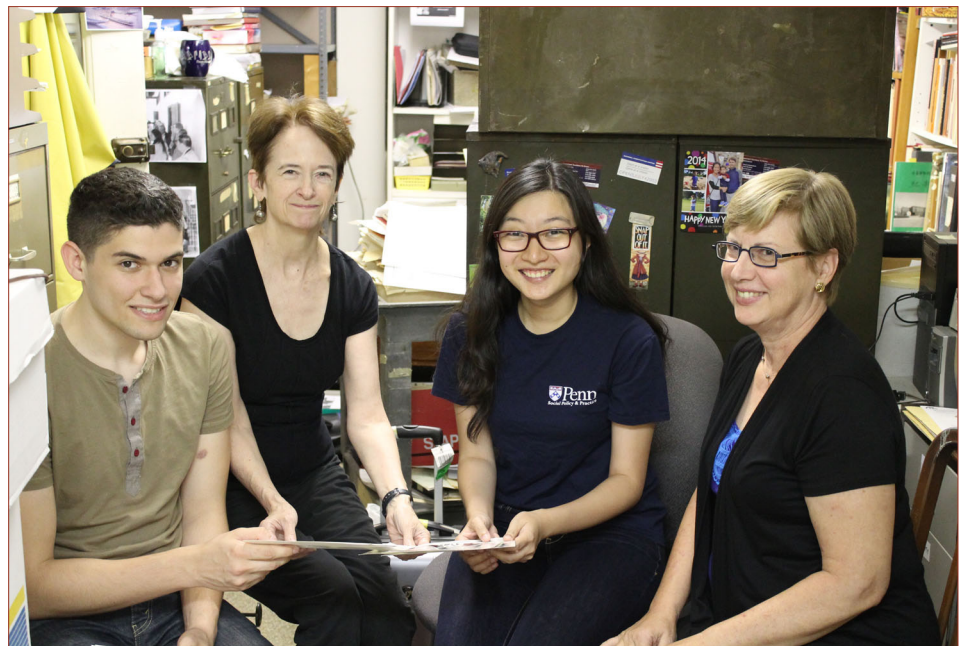
Souksamone Sonethongkham and Ben Marwick. “Variation in cores excavated from four rockshelter sites in Luang Prabang province.”

Lab NOTES

❖ Collaborator **Dr. Helen Lewis**, a Senior Lecturer from the School of Archaeology at the University College Dublin, visited ISEAA this past August 3-10. She worked with our team on MMAP reports and publications, including the Tham An Mah publication and section drawings for the final report.



MMAP and other presenters in the Lao session at the IPPAs. Included (from left) are Souksamone Sonethongkha (Lao PDR), Joyce White, and Stephen Oppenheimer (Oxford University). MMAP co-director Bounheuang Bouasisengpaseuth is at center in red shirt.



From left to right: Christian Clark, Joyce White, Qianfei (Faye) Yang, and Beth Van Horn meet to discuss a marketing plan for ISEAA. Photo by Ardeth Anderson.

❖ Cyler Conrad, a grad student at University of New Mexico, is organizing a new ISEAA Social Media initiative to post updates on current archaeological research on Twitter, with cross-postings on our Facebook page.

❖ Marty Cappelletti (Sewell) visited the ISEAA lab on June 19th. Marty was the coordinator of *Ban Chiang: Discovery of a Lost Bronze Age* produced by

the Smithsonian Institution Traveling Exhibition Service (SITES) in 1982.

❖ The Southeast Asian Archaeology Newsblog has been posting submitted images on SEA archaeology, and the illustration named *The Splatt Theory* by Ardeth Anderson, of how the Ban Chiang site was formed, was the first posting! Here’s a link to the blog and the image: www.southeastasianarchaeology.com/2014/09/01/the-splatt-theory.

Donate to ISEAA today!

- Sustaining Donor
- One-time Donation

Dr./Mr./Mrs./Ms./Miss

Address

City, State Zip

Country

Phone

E-mail address

Enclosed is my tax deductible contribution of \$ _____ payable to **ISEAA/UAC.**

Send checks to:

The Institute for
Southeast Asian Archaeology
(ISEAA)
3260 South Street
Philadelphia, PA 19104-6324

OR visit the ISEAA website at
www.ISEAArchaeology.org
and donate on our secure giving site.

*The Institute for Southeast Asian Archaeology is a program partner of the Urban Affairs Coalition (UAC). UAC administers ISEAA funds as a 501c3 nonprofit, so that ISEAA can focus on conducting and publishing research. The official registration and financial information of the UAC may be obtained from the Pennsylvania Department of State by calling toll-free, within Pennsylvania, 1-800-732-0999, or go to www.charities.pa.gov: enter EIN237046393 and select "Charities". Registration does not imply endorsement.



Info@ISEAArchaeology.org
joycewhite@iseaarchaeology.org

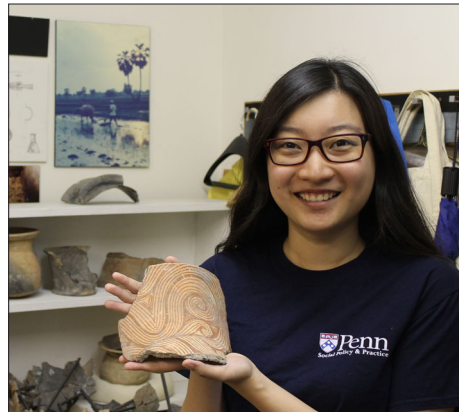
New Faces at ISEAA



Chloe Kaczvinsky is a sophomore in Penn's College of Arts and Sciences, and a Penn work-study student with ISEAA. She's the current bibliographer for the Southeast Asian Bibliographic Database. Chloe plans to major in International Relations with a minor in Biology. She's interested in international institutions, Scandinavia, and evolutionary psychology and biology.



Christian Clarke joined ISEAA the summer of 2014 as an intern from the Urban Affairs Coalition. He worked with Joyce, Beth Van Horn, and Faye Yang to develop marketing and communications efforts to expand ISEAA's audience, and helped develop a stronger online presence on LinkedIn and Wikipedia. Christian is now a senior at Temple University working towards a degree in marketing.



Qianfei (Faye) Yang came to ISEAA in Fall 2013 from Penn's Fels Institute of Government with an interest in marketing and operation of nonprofits. She used ISEAA as a case study for her Marketing class, but during that time also developed an interest in ISEAA's involvement in archaeology and heritage preservation in Asia. She came back the summer of 2014 to volunteer after getting her Masters' degree in Social Policy, and worked with Joyce White, Beth Van Horn, and Christian Clarke to develop fundraising messages and positioning for ISEAA. Faye is now back home in China.



Klaudia Amenabar joined us as a Penn work-study student in Fall 2014. She's revamping our web presence, including redesign and integration of the ISEAA, Ban Chiang, and MMAP websites, and is also working to take ISEAA's social media presence to the next level. She established ISEAA Twitter and Vine accounts. Klaudia is a communications major in Penn's Annenberg School (Class of 2016). She built and manages several student websites and is an active blogger on Tumblr (18,600 followers). You can also find her on Twitter, Vine, and LinkedIn.